



# CDM Regulations

These regulations apply to all construction projects where the contractor is responsible for the design and construction of the building. The regulations are designed to ensure that the building is safe and sound throughout its life cycle.

Item No	Description	Date	Status
1	Initial CDM assessment and appointment of the CDM Coordinator	27/04/2022	Completed
2	Pre-construction phase	27/04/2022	In Progress
3	Design and construction phase	27/04/2022	In Progress
4	Handover to the client	27/04/2022	Not Started

Item No	Description	Date	Status
5	Final CDM assessment and appointment of the CDM Coordinator	27/04/2022	Not Started
6	Post-construction phase	27/04/2022	Not Started
7	Handover to the client	27/04/2022	Not Started
8	Final CDM assessment and appointment of the CDM Coordinator	27/04/2022	Not Started

1



# GA FIRST FLOOR PLAN

1 : 100

# PLANNING

**GENERAL ARRANGEMENT FLOOR PLANS**  
**FIRST FLOOR GA PLAN**

**DRAWING TITLE**  
**Calrose College Expansion**  
**Teaching Block**

**CLIENT**  
**Calrose College Expansion**  
**Teaching Block**

**PROJECT**  
**Calrose College Expansion**  
**Teaching Block**

**CLIENT**  
**Calrose College Expansion**  
**Teaching Block**

**CLIENT**  
**Calrose College Expansion**  
**Teaching Block**

**CLIENT**  
**Calrose College Expansion**  
**Teaching Block**

**CLIENT**  
**Calrose College Expansion**  
**Teaching Block**

**CLIENT**  
**Calrose College Expansion**  
**Teaching Block**

**CLIENT**  
**Calrose College Expansion**  
**Teaching Block**

**CLIENT**  
**Calrose College Expansion**  
**Teaching Block**

**CLIENT**  
**Calrose College Expansion**  
**Teaching Block**

**CLIENT**  
**Calrose College Expansion**  
**Teaching Block**

**CLIENT**  
**Calrose College Expansion**  
**Teaching Block**

**CLIENT**  
**Calrose College Expansion**  
**Teaching Block**

**CLIENT**  
**Calrose College Expansion**  
**Teaching Block**

**CLIENT**  
**Calrose College Expansion**  
**Teaching Block**

**CLIENT**  
**Calrose College Expansion**  
**Teaching Block**

**CLIENT**  
**Calrose College Expansion**  
**Teaching Block**

**CLIENT**  
**Calrose College Expansion**  
**Teaching Block**

**CLIENT**  
**Calrose College Expansion**  
**Teaching Block**

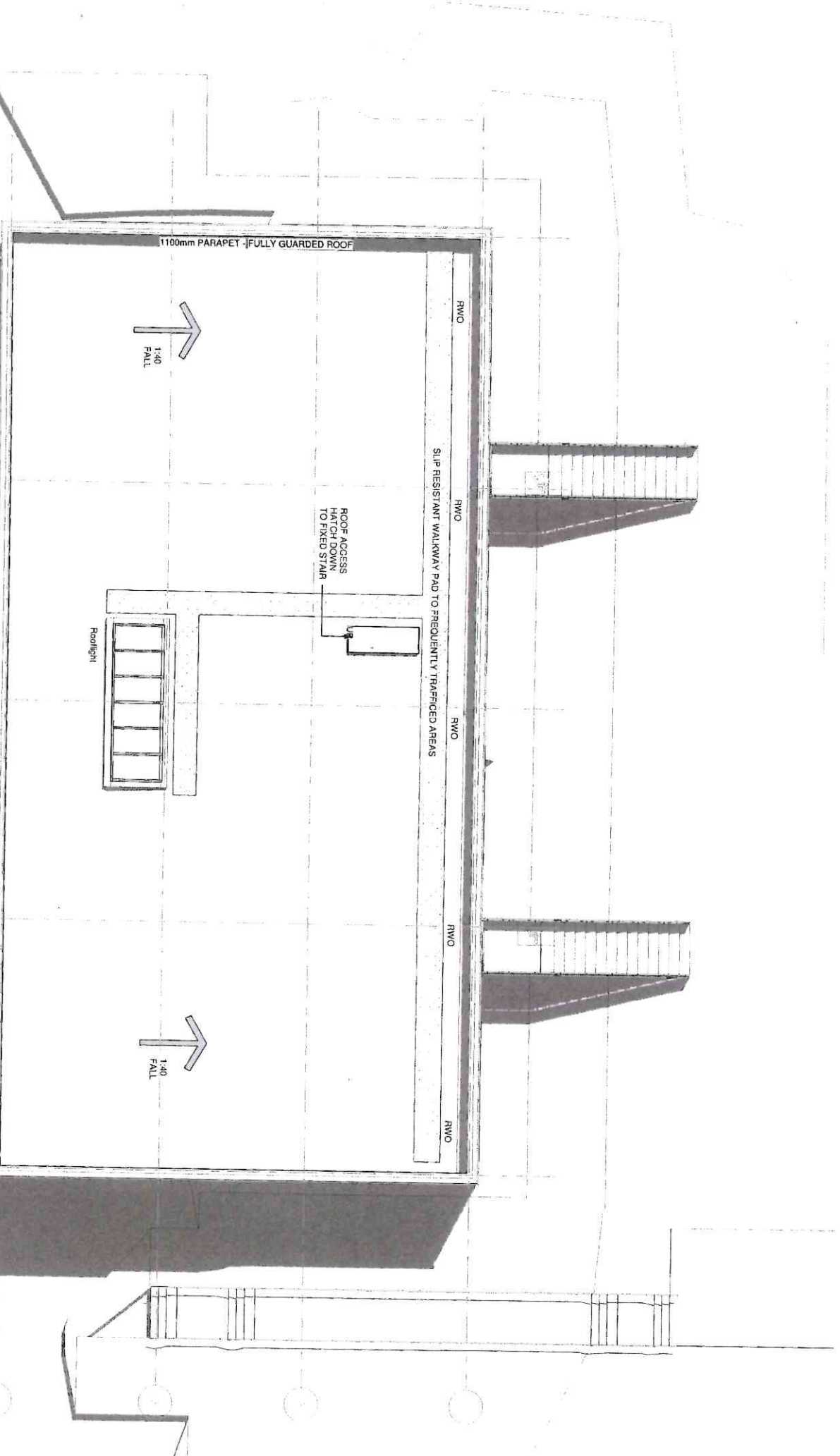
**CLIENT**  
**Calrose College Expansion**  
**Teaching Block**

**CLIENT**  
**Calrose College Expansion**  
**Teaching Block**

**CLIENT**  
**Calrose College Expansion**  
**Teaching Block**

1

CDM Regulations		
Activity	Date	Status
Pre-construction Information	2022/04/22	As Issued
Design	2022/04/22	As Issued
Construction Phase	2022/04/22	As Issued
Handover	2022/04/22	As Issued
Final	2022/04/22	As Issued



1  
GA ROOF PLAN  
1 : 100  
GRAPHIC SCALE 1:100

PLANNING

DRAWING TITLE  
GENERAL ARRANGEMENT  
FLOOR PLANS  
GA ROOFPLAN  
DRAWING STATUS

PROJECT  
Calmrose College Expansion  
Teaching Block

ORGANISER  
CPMG Architects Ltd  
Project Purpose/Phase

12 St Peter's Close, Harrogate, HG1 2JF  
Harrogate, North Yorkshire, YO10 1AB  
Tel: 01423 850000  
www.cpmgarchitects.com

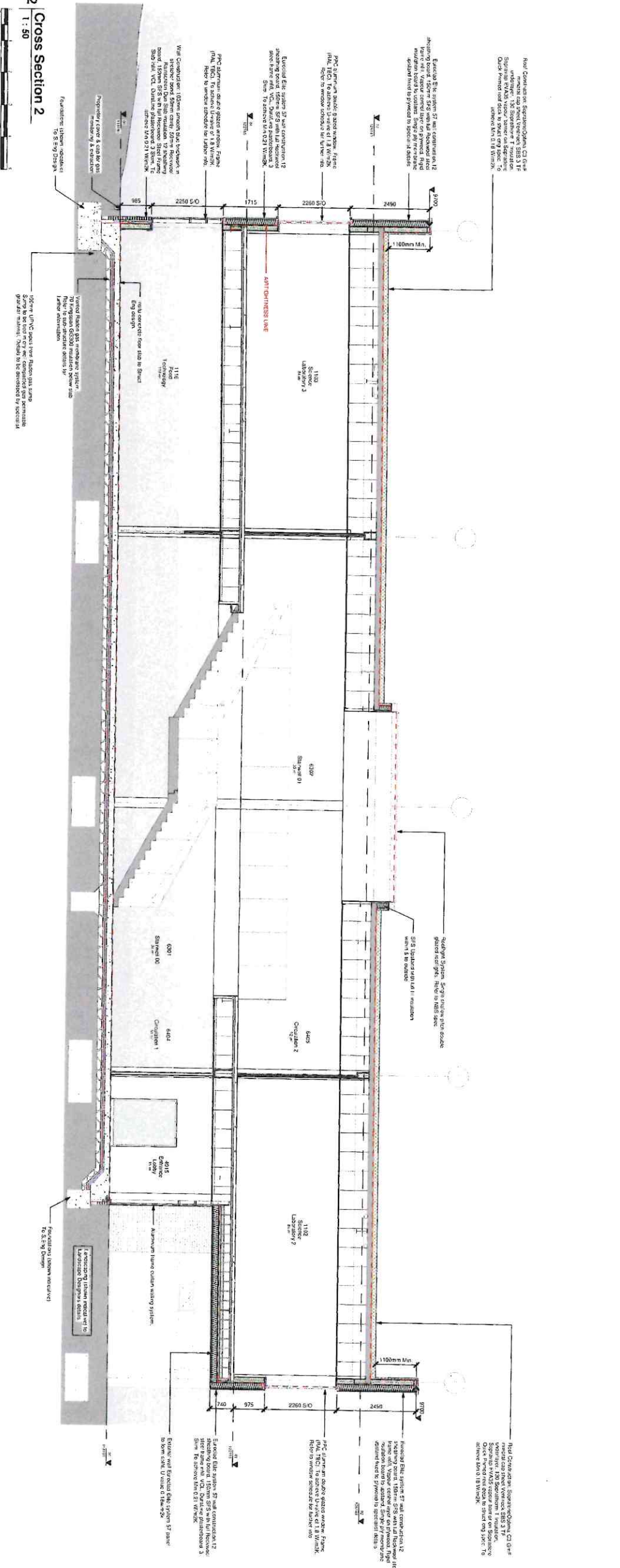
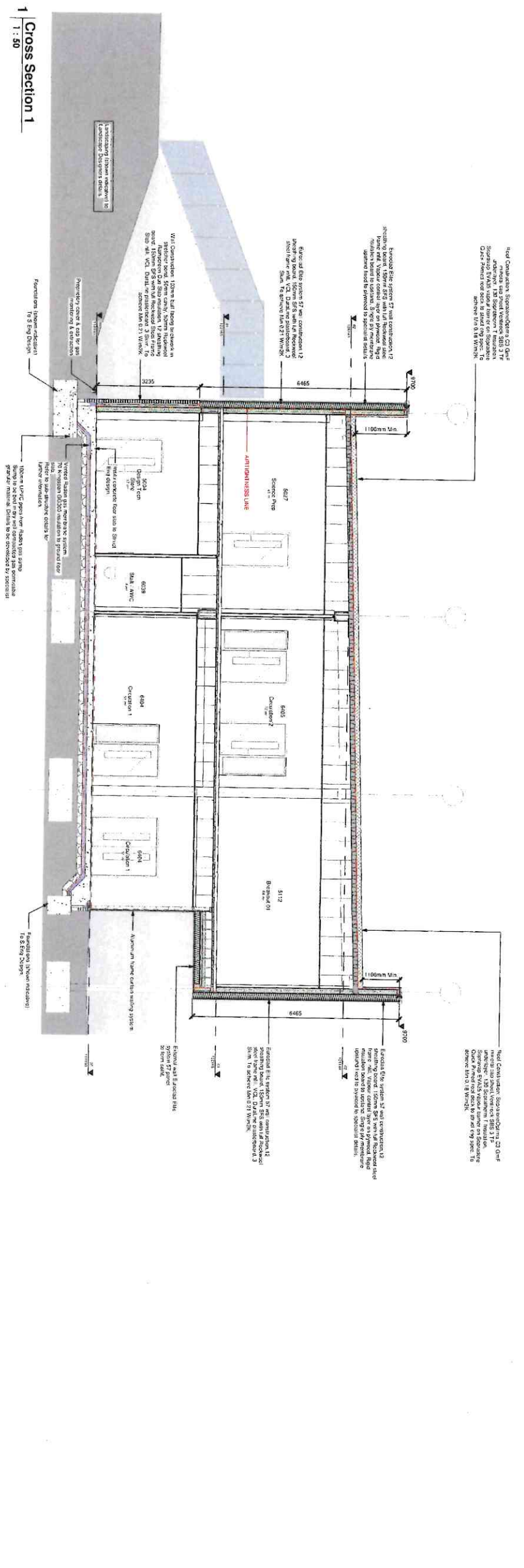
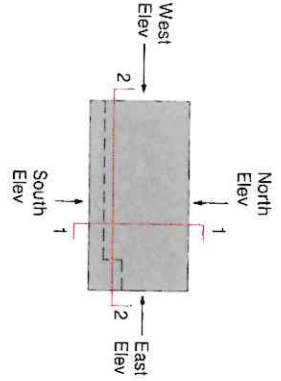
0115 858 9900  
0303 492 1800  
0171 481 2292  
www.cpmgarchitects.com



NO.	DATE	DESCRIPTION	BY
P03	2022/04/22	Preliminary CP Issue	DB
P02	2022/04/22	Final CP Issue	DB
P01	2022/05/06	CP Issue	DB

DRAWING	DATE	SCALE	VERSION
TR1	2022-04-22	As indicated	A1
PROJECT - DIMENSIONS ZONE LEVEL TYPE SIZE NUMBER			
9260-CPM-01-02-DR-A-2002			P03

CDM Regulations	
Regulation	Compliance
1. Construction of buildings	Compliant
2. Construction of structures	Compliant
3. Construction of works	Compliant
4. Construction of works	Compliant
5. Construction of works	Compliant
6. Construction of works	Compliant
7. Construction of works	Compliant
8. Construction of works	Compliant
9. Construction of works	Compliant
10. Construction of works	Compliant



PRELIMINARY	
Item	Description
01	GENERAL NOTES
02	CONSTRUCTION NOTES
03	MECHANICAL NOTES
04	ELECTRICAL NOTES
05	PLUMBING NOTES
06	FINISHES

**EXTERNAL DETAILS**  
**DETAILED CROSS SECTION**

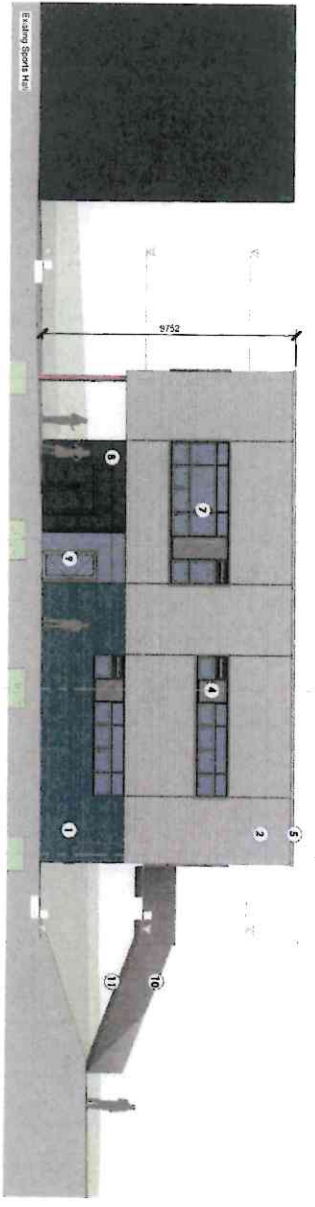
**PRELIMINARY**

9260-CPM-01-XX-DR-A-2011 P01

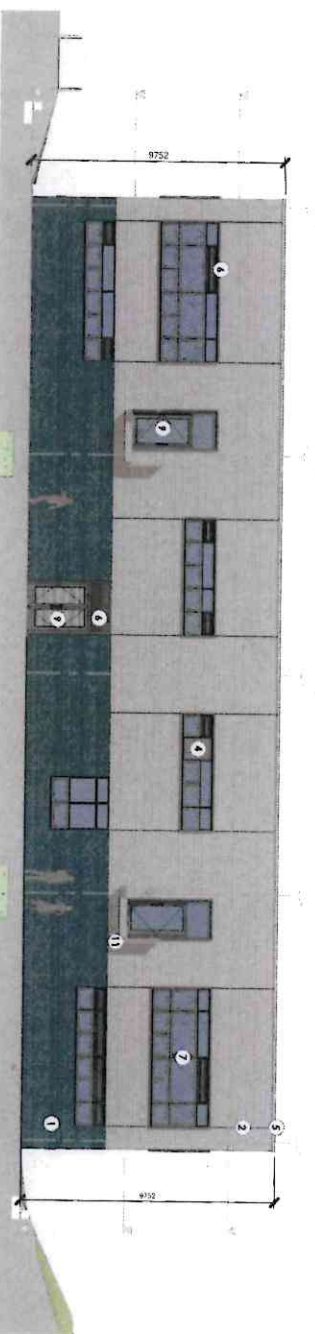
**Calumet College Expansion**  
**Teaching Block**

**bam**  
**CPMG Architects Ltd**

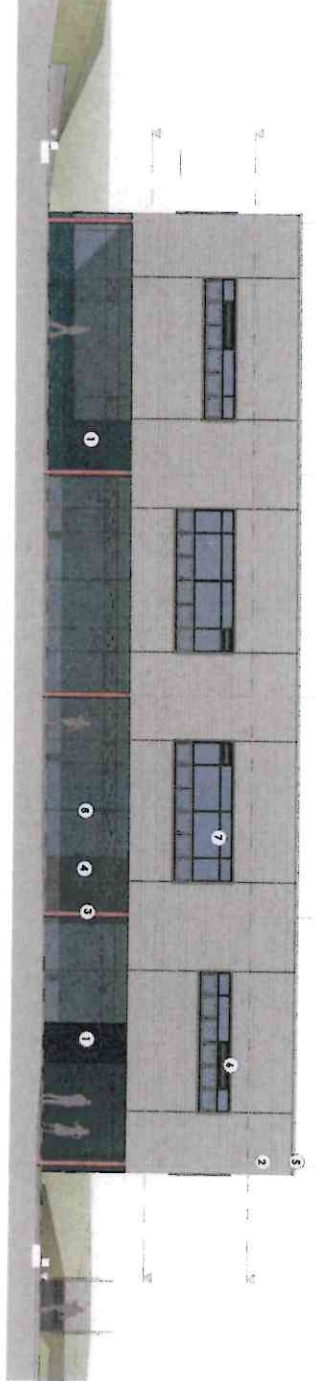
11100  
 11100  
 11100



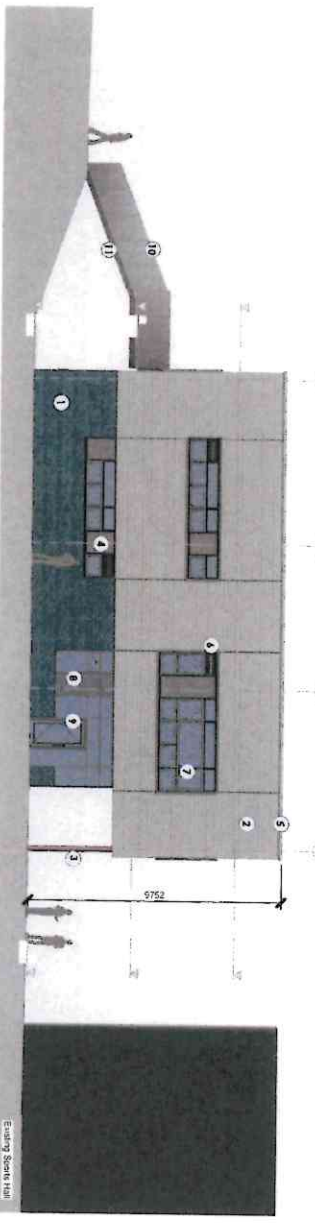
1 East Elevation  
1 : 100



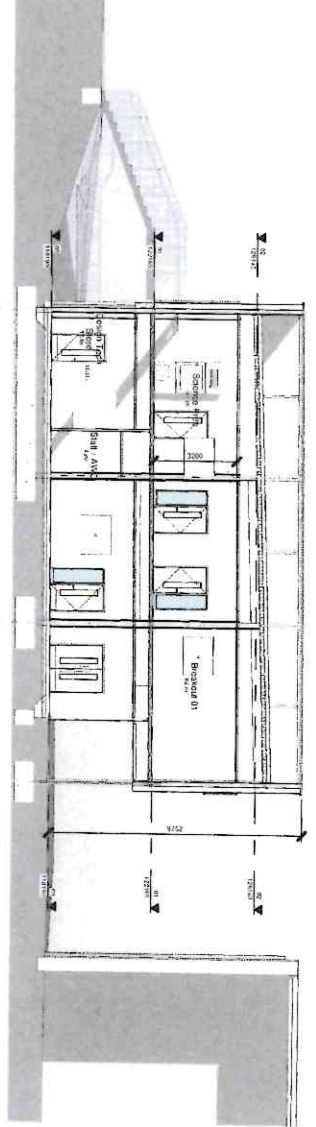
2 North Elevation  
1 : 100



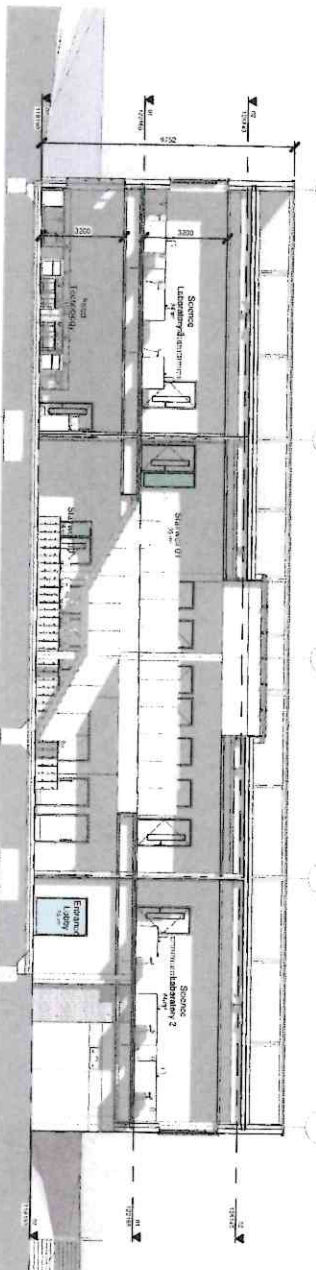
3 South Elevation  
1 : 100



4 West Elevation  
1 : 100



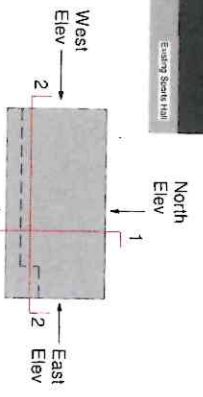
5 Cross Section 1  
1 : 100



6 Cross Section 2  
1 : 100

CDM Regulations	
Activity	Responsible Party
1. Preparing and reviewing the Health and Safety File	10.10.2010
2. Preparing and reviewing the Construction Phase Plan	10.10.2010
3. Preparing and reviewing the Method Statement	10.10.2010
4. Preparing and reviewing the Risk Assessment	10.10.2010
5. Preparing and reviewing the Construction Management Plan	10.10.2010
6. Preparing and reviewing the Construction Management Information	10.10.2010
7. Preparing and reviewing the Construction Management Information	10.10.2010
8. Preparing and reviewing the Construction Management Information	10.10.2010
9. Preparing and reviewing the Construction Management Information	10.10.2010
10. Preparing and reviewing the Construction Management Information	10.10.2010
11. Preparing and reviewing the Construction Management Information	10.10.2010

- GA ELEVATION KEY**
- 0 Brick (Smooth Finish Range)
  - 1 Smoothed Pale Grey Cladding
  - 2 Horizontal (1.2m) Grey Concrete
  - 3 Glass (1.2m) Grey Concrete
  - 4 Horizontal Glass (1.2m) Grey Concrete
  - 5 Painted Cladding
  - 6 PVC Aluminium Louver
  - 7 PVC Aluminium Window
  - 8 PVC Aluminium Double Window
  - 9 PVC Aluminium Door
  - 10 Factor governed or powder coated Steel (With Reinforcement)
  - 11 Precast Concrete Slabs



**CPMG Agency Ltd**  
 100-102, The Quadrant, London, SE1 1JA  
 Tel: 020 7463 4400  
 Fax: 020 7463 4401  
 Email: info@cpmg.co.uk  
 www.cpmg.co.uk

**CPMG Agency Ltd**  
 100-102, The Quadrant, London, SE1 1JA  
 Tel: 020 7463 4400  
 Fax: 020 7463 4401  
 Email: info@cpmg.co.uk  
 www.cpmg.co.uk

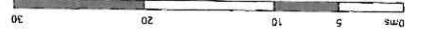
**Calistose College Expansion**  
 Teaching Block

**GENERAL ARRANGEMENT**  
**ELEVATIONS**  
**GA ELEVATIONS & SECTIONS**

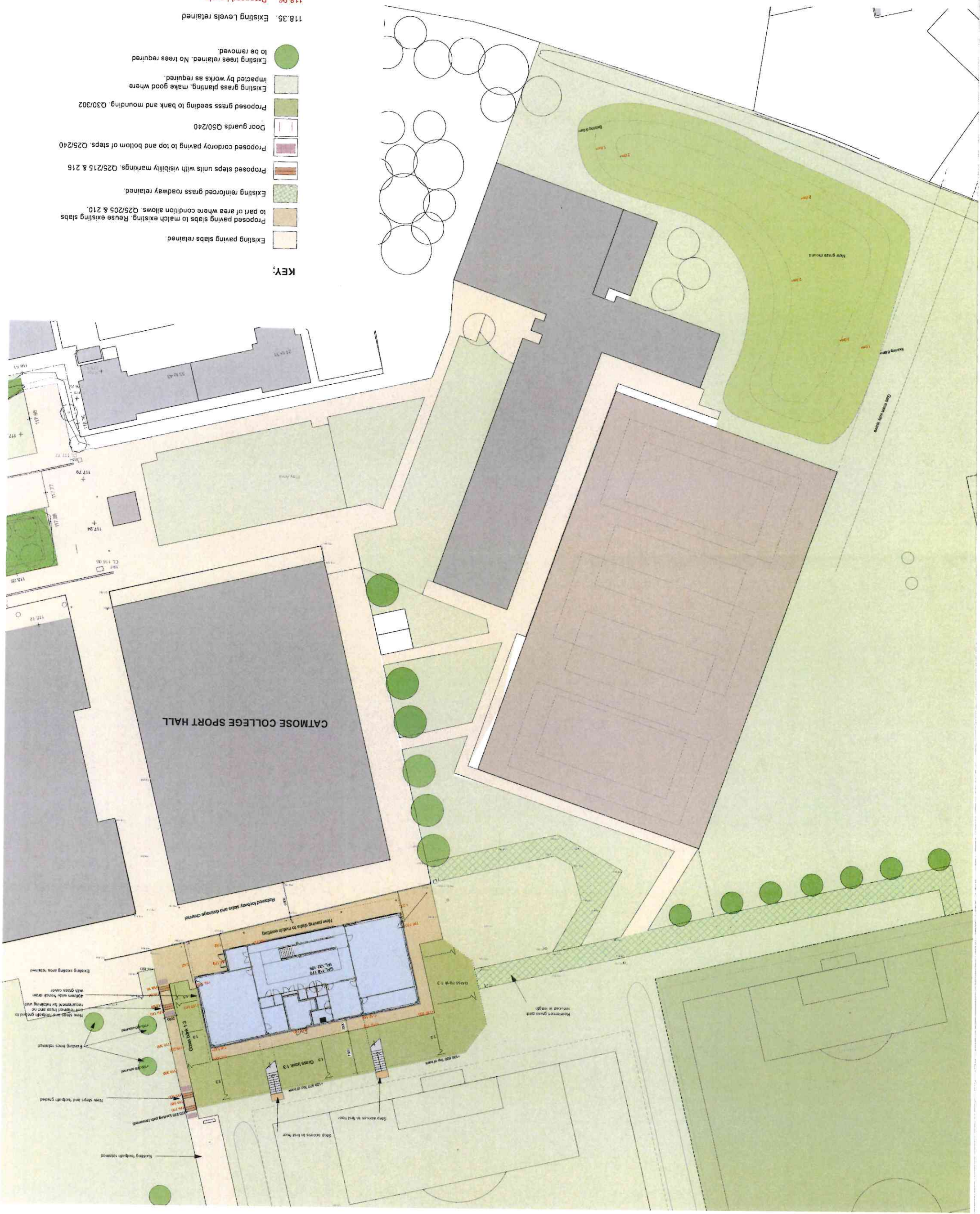
**PLANNING**

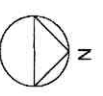
NO.	DATE	BY	CHKD BY	SCALE	SECTION
1	2010.10.22	DB	AM	1:100	GA
2	2010.10.22	DB	AM	1:100	GA
3	2010.10.22	DB	AM	1:100	GA
4	2010.10.22	DB	AM	1:100	GA
5	2010.10.22	DB	AM	1:100	GA
6	2010.10.22	DB	AM	1:100	GA
7	2010.10.22	DB	AM	1:100	GA
8	2010.10.22	DB	AM	1:100	GA
9	2010.10.22	DB	AM	1:100	GA
10	2010.10.22	DB	AM	1:100	GA
11	2010.10.22	DB	AM	1:100	GA

NOTE: see drawing 90002 for works outside the area noted within the drawing.



- KEY:**
- Existing paving slabs retained.
  - Proposed paving slabs to match existing. Reuse existing slabs to part of area where condition allows. Q25/205 & 210.
  - Existing reinforced grass roadway retained.
  - Proposed steps units with visibility markings. Q25/215 & 216
  - Proposed cordery paving to top and bottom of steps. Q25/240
  - Door guards Q50/240
  - Proposed grass seeding to bank and mounding. Q30/302
  - Existing grass planting, make good where impacted by works as required.
  - Existing trees retained. No trees required to be removed.
  - Existing Levels retained
  - Proposed Levels

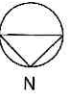




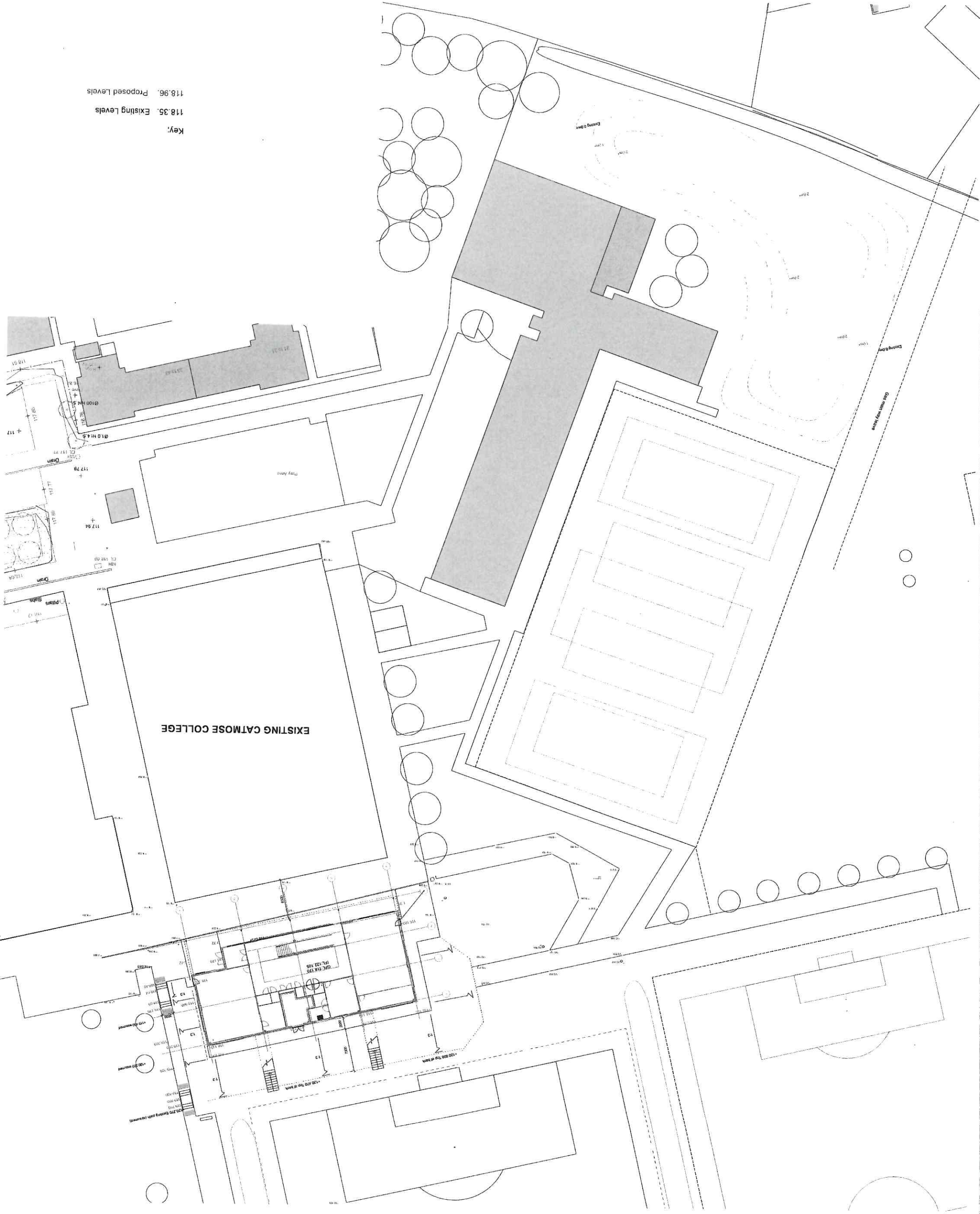
**LEGEND**  
 — School site boundary and Legal Boundary

NOTE: See drawing 90001 for detail information for proposed landscape around new building and mounding area.

**DHLA**  
 Client: BAV Construction UK Ltd.  
 Project: Catmose College  
 Design No: 100568-DHL-ZZ-ZZ-DR-L-90002  
 Rev: P01  
 Date: June 2022  
 Scale: 1:200 @ A0



Key:  
 118.35: Existing Levels  
 118.96: Proposed Levels

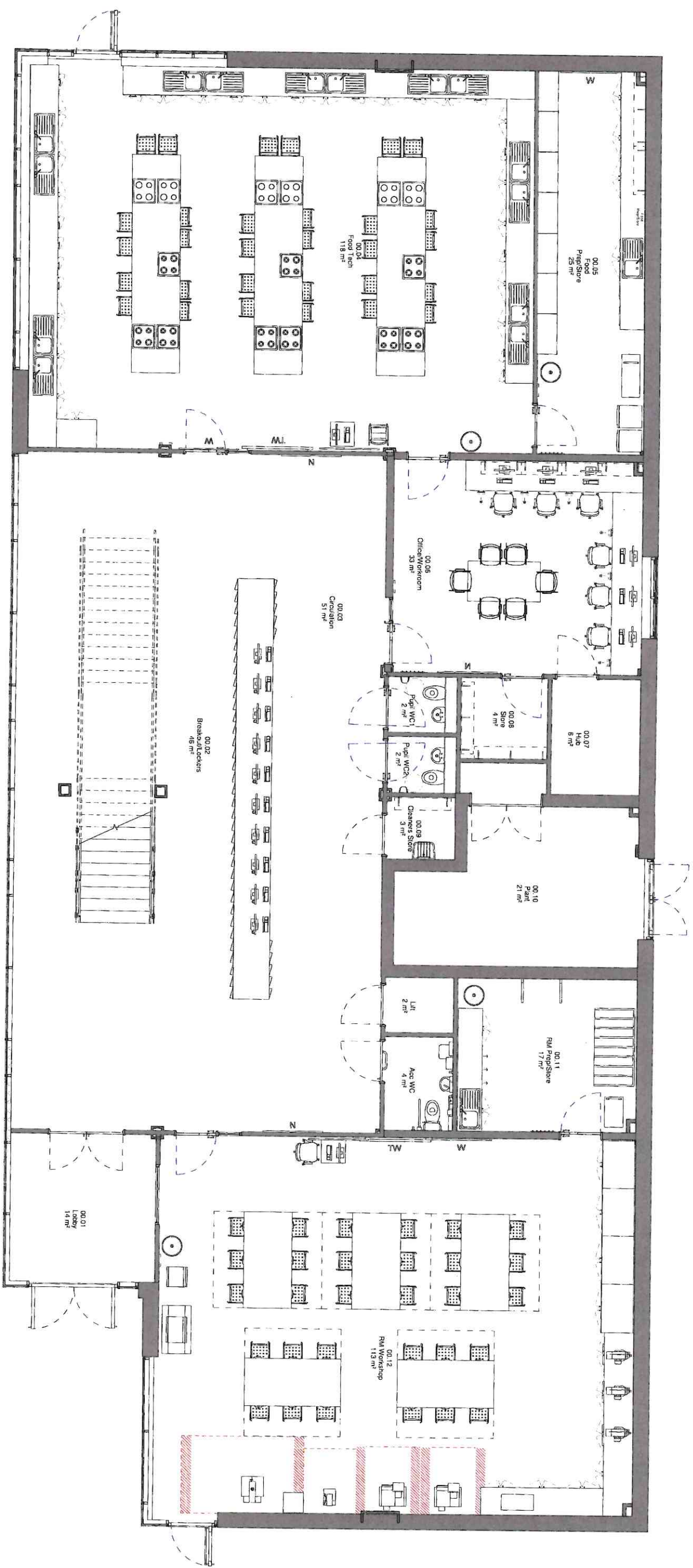


**EXISTING CATMOSE COLLEGE**

G.P.E. (118.710)  
 15L.122.125







**1** Level 0 GA  
 1 : 50

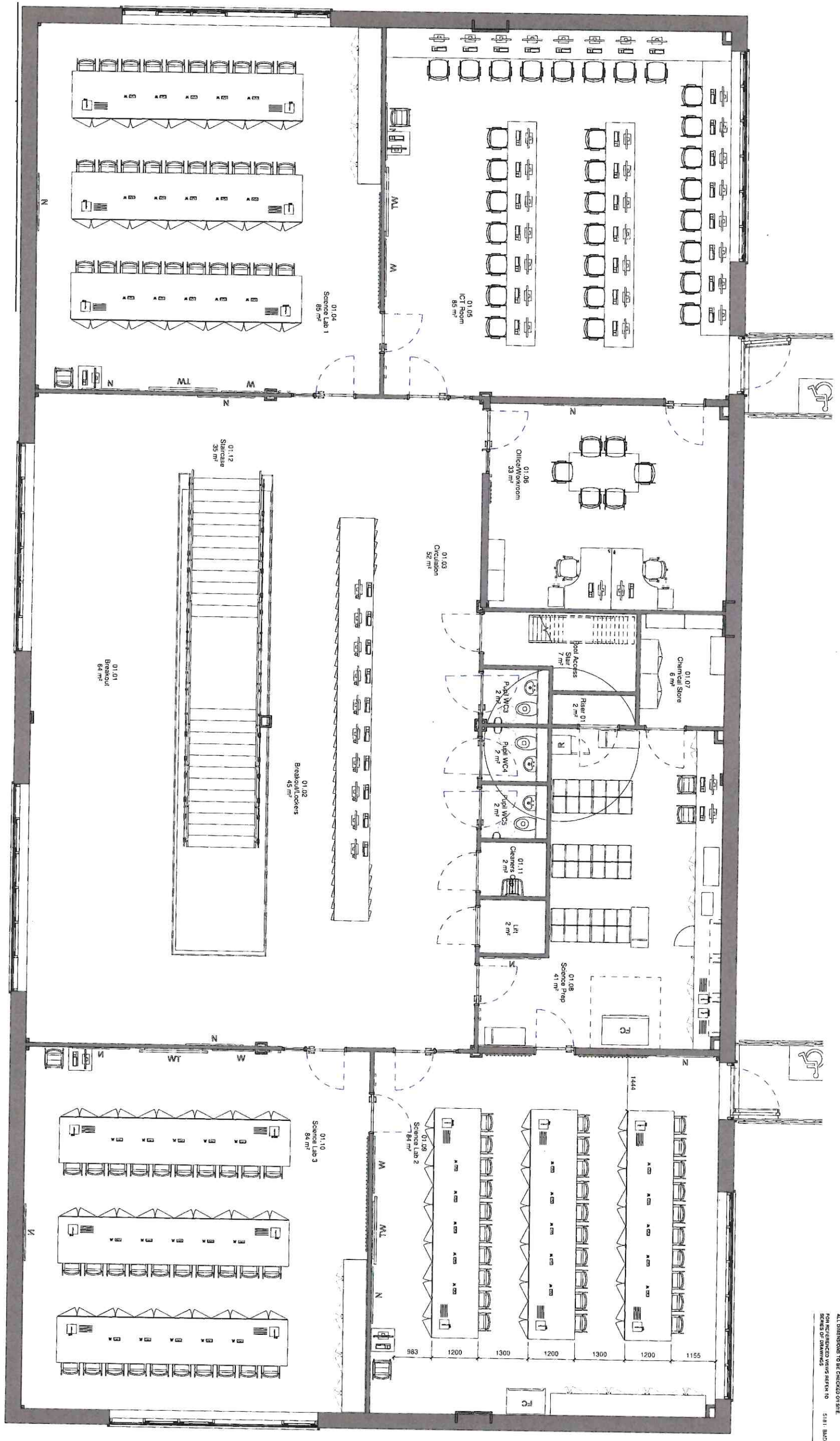
- Wichtiges Informationen (Wichtiges)**  
 Wichtige Informationen (Wichtiges)
- 50 - Installation
  - 51 - Qualität der Konstruktion
  - 52 - Qualität der Ausführung
  - 53 - Qualität der Ausführung
  - 54 - Qualität der Ausführung
  - 55 - Qualität der Ausführung
  - 56 - Qualität der Ausführung
  - 57 - Qualität der Ausführung
- Einzelne Dimensionen (Einzelne)**  
 Einzelne Dimensionen (Einzelne)
- 51 - Qualität der Konstruktion
  - 52 - Qualität der Ausführung
  - 53 - Qualität der Ausführung
  - 54 - Qualität der Ausführung
  - 55 - Qualität der Ausführung
  - 56 - Qualität der Ausführung
  - 57 - Qualität der Ausführung
- Einzelne Dimensionen (Einzelne)**  
 Einzelne Dimensionen (Einzelne)
- 51 - Qualität der Konstruktion
  - 52 - Qualität der Ausführung
  - 53 - Qualität der Ausführung
  - 54 - Qualität der Ausführung
  - 55 - Qualität der Ausführung
  - 56 - Qualität der Ausführung
  - 57 - Qualität der Ausführung

P02 SC  
 Updated drawing client meeting 20.08.22

KEY PLAN  
 Tap-select then edit family  
 to add your keyplan



Project: Calmose College Expansion  
 Ground Floor FFE Plan  
 Scale: 1:50 @ A1  
 Date: 01/23/15  
 Project: BMD-MB-00-DR-1  
 Drawing: 5181  
 Sheet: 15100 P02



1 Level 1 GA  
1 : 50

- SYMBOLS  
50 - Head of desk  
51 - Sink for hand wash  
52 - Sink for eye wash  
53 - Sink for equipment wash  
54 - Sink for spill cleanup  
55 - Sink for site cleanup  
56 - Sink for site cleanup  
57 - Sink for site cleanup
- STANDARD DESK CONFIGURATIONS  
S1 - Standard desk configuration  
S2 - Standard desk configuration  
S3 - Standard desk configuration  
S4 - Standard desk configuration  
S5 - Standard desk configuration  
S6 - Standard desk configuration  
S7 - Standard desk configuration
- STANDARD SEATING CONFIGURATIONS  
M1 - Standard seating configuration  
M2 - Standard seating configuration  
M3 - Standard seating configuration  
M4 - Standard seating configuration  
M5 - Standard seating configuration  
M6 - Standard seating configuration  
M7 - Standard seating configuration  
M8 - Standard seating configuration  
M9 - Standard seating configuration  
M10 - Standard seating configuration  
M11 - Standard seating configuration  
M12 - Standard seating configuration  
M13 - Standard seating configuration  
M14 - Standard seating configuration  
M15 - Standard seating configuration
- STANDARD CLOSET CONFIGURATIONS  
C1 - Standard closet configuration  
C2 - Standard closet configuration  
C3 - Standard closet configuration  
C4 - Standard closet configuration  
C5 - Standard closet configuration  
C6 - Standard closet configuration  
C7 - Standard closet configuration  
C8 - Standard closet configuration  
C9 - Standard closet configuration  
C10 - Standard closet configuration  
C11 - Standard closet configuration  
C12 - Standard closet configuration  
C13 - Standard closet configuration  
C14 - Standard closet configuration  
C15 - Standard closet configuration
- STANDARD STORAGE CONFIGURATIONS  
S1 - Standard storage configuration  
S2 - Standard storage configuration  
S3 - Standard storage configuration  
S4 - Standard storage configuration  
S5 - Standard storage configuration  
S6 - Standard storage configuration  
S7 - Standard storage configuration  
S8 - Standard storage configuration  
S9 - Standard storage configuration  
S10 - Standard storage configuration  
S11 - Standard storage configuration  
S12 - Standard storage configuration  
S13 - Standard storage configuration  
S14 - Standard storage configuration  
S15 - Standard storage configuration
- STANDARD DOOR CONFIGURATIONS  
D1 - Standard door configuration  
D2 - Standard door configuration  
D3 - Standard door configuration  
D4 - Standard door configuration  
D5 - Standard door configuration  
D6 - Standard door configuration  
D7 - Standard door configuration  
D8 - Standard door configuration  
D9 - Standard door configuration  
D10 - Standard door configuration  
D11 - Standard door configuration  
D12 - Standard door configuration  
D13 - Standard door configuration  
D14 - Standard door configuration  
D15 - Standard door configuration

Published Documentation Conventions  
A: All dimensions are in meters and millimeters (m/m)  
B: All dimensions are in feet and inches (ft/in)  
C: All dimensions are in feet and inches (ft/in)  
D: All dimensions are in feet and inches (ft/in)  
E: All dimensions are in feet and inches (ft/in)

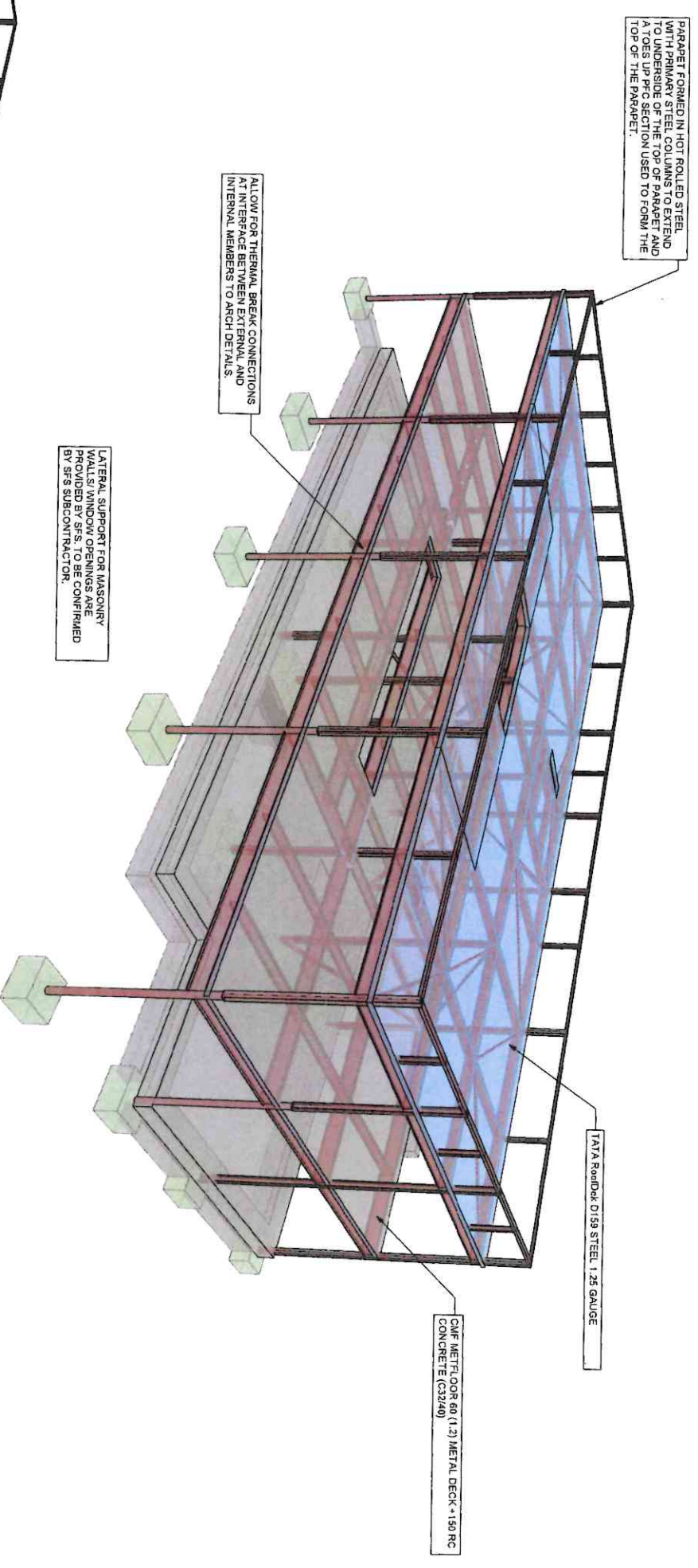
Updated following client meeting 2016 02 22

KEY PLAN  
Tab-select then edit family  
to add your keyplan

Project: Carmose College Expansion  
In: First Floor/FEE Plan  
Scale: 1:50 @ A1  
Date: 06/15/22  
Author: [Name]  
Checked: SC  
Reviewed: SC  
5181  
151m bms

Information  
Project Name  
Project No.  
Scale  
Date  
Author  
Checked  
Reviewed  
5181  
151m bms

DO NOT SCALE FROM THIS DRAWING.  
ALL DIMENSIONS TO BE CHECKED ON SITE.

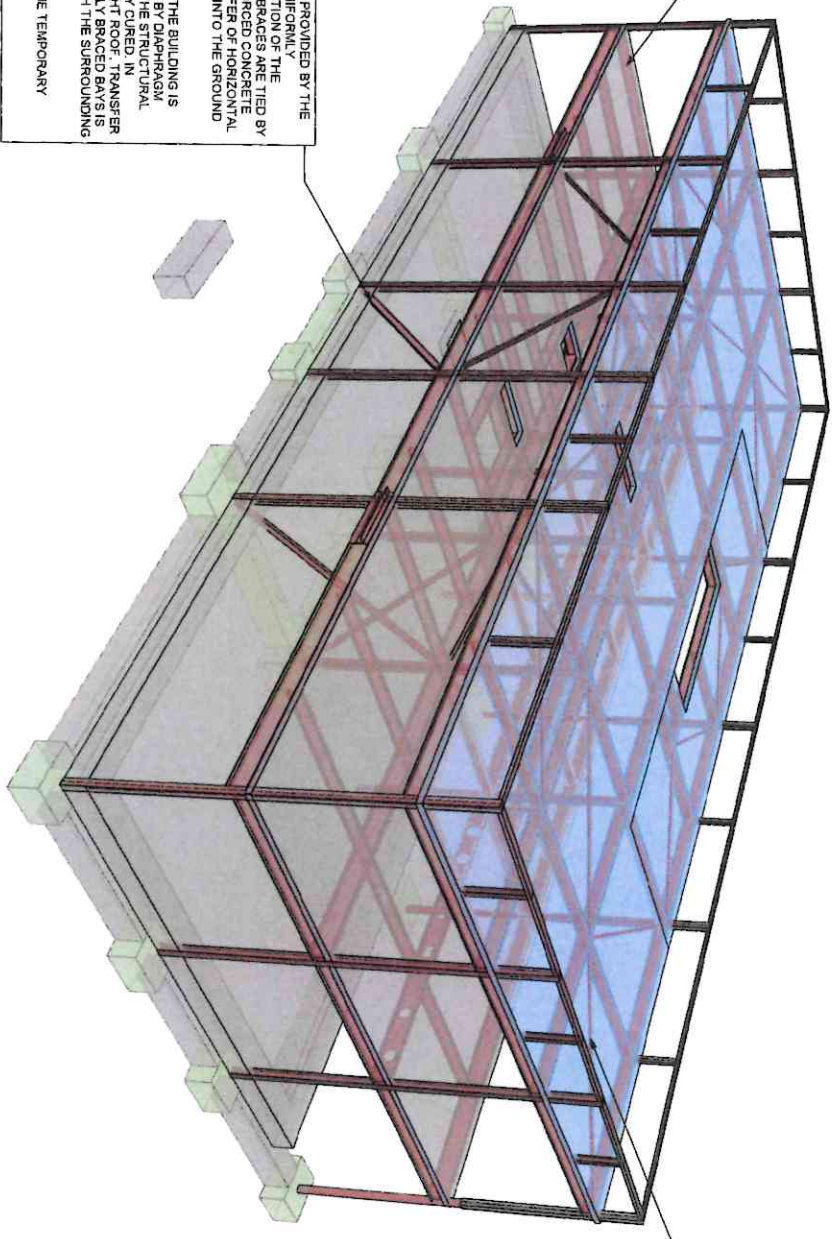


COMPOSITE SLAB ACTS AS STIFF HORIZONTAL DIAPHRAGM. SHEAR STUDS CONNECT THE SLAB TO THE BEAMS TO TRANSFER LATERAL LOADS TO BRACED BAYS. THE DESIGN ASSUMES THAT THE STEEL FLOOR BEAMS AT ALL LEVELS ARE RESTRAINED BY THE PROFILED METAL DECK IN THE TEMPORARY CASE.

LATERAL STABILITY OF THE STRUCTURE IS PROVIDED BY THE USE OF VERTICAL BRACES, POSITIONED UNIFORMLY THROUGHOUT THE BUILDING. AT THE LOCATION OF THE VERTICALLY BRACED BAYS, THE VERTICAL BRACES ARE TIED BY HOLDING DOWN BOLTS INTO FULLY REINFORCED CONCRETE FOUNDATIONS. ENSURE ADEQUATE TRANSFER OF HORIZONTAL AND UPLIFT FORCES, INTO THE GROUND VIA THE FOUNDATIONS.

THE ACTION OF THE WIND ON THE SIDE OF THE BUILDING IS TRANSFERRED THROUGH THE STRUCTURE BY DIAPHRAGM ACTION ACROSS THE FLOOR PLATE ONCE THE STRUCTURAL TOPPING HAS BEEN CAST AND ADEQUATELY CURED. IN CONDITIONS WHERE THERE IS A LIGHTWEIGHT ROOF, TRANSFER OF HORIZONTAL FORCES TO THE FOUNDATIONS IS PROVIDED BY PLAN BRACING ACTING AS A TRUSS WITH THE SURROUNDING BEAMS.

THE CONTRACTOR IS RESPONSIBLE FOR THE TEMPORARY STABILITY OF THE FRAME.



STABILITY OF STRUCTURE DUE TO LATERAL FORCES IS ACHIEVED BY HOLDING DOWN BOLTS ON THE TRANSFERRING THESE FORCES TO FOUNDATIONS VIA VERTICAL BRACINGS AS SHOWN.

**baim**  
Building Information Management  
Architectural  
Structural  
Mechanical  
Electrical  
Civil  
Construction

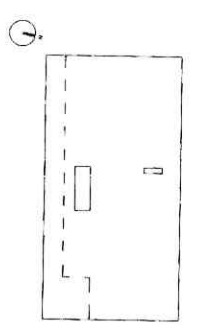
**STRUCTURAL STRATEGY**

**FOR COORDINATION**

10/06/2022  
10/06/2022  
10/06/2022

5181 S1

HIND0927 - BMD - ZZ - DR - S - 200710 P02



PO2	VA	NS	10/06/2022	UPDATED TO REFLECT LATEST DESIGN CHANGES
PO1	MP	NS	19/06/2022	WORK IN PROGRESS ISSUE FOR COORDINATION